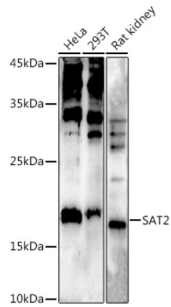
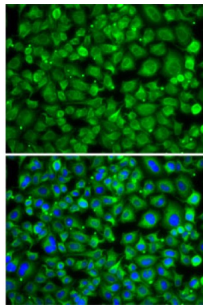


Thialysine N-Epsilon-Acetyltransferase (SAT2) Antibody

Catalogue No.: abx005443



Western blot analysis of various lysates using at 1/500 dilution. Secondary antibody: HRP-conjugated Goat anti-Rabbit IgG (H+L) at 1/10000 dilution. Lysates/proteins: 25 µg per lane. Blocking buffer: 3% nonfat dry milk in TBST. Exposure time: 90s.



Immunofluorescence analysis of A-549 cells using SAT2 Antibody. Secondary antibody: Cy3-conjugated Goat anti-Rabbit IgG (H+L) at 1/500 dilution. Blue: DAPI for nuclear staining.

SAT2 Antibody is a Rabbit Polyclonal antibody against SAT2.

Target:	Thialysine N-Epsilon-Acetyltransferase (SAT2)
Clonality:	Polyclonal
Reactivity:	Human, Rat
Tested Applications:	ELISA, WB, IF/ICC
Host:	Rabbit
Recommended dilutions:	ELISA: 1 µg/ml, WB: 1/100 - 1/500, IF/ICC: 1/50 - 1/100. Optimal dilutions/concentrations should be determined by the end user.
Conjugation:	Unconjugated
Immunogen:	Recombinant fusion protein containing a sequence corresponding to amino acids 1-170 of human SAT2.
Isotype:	IgG
Form:	Liquid
Purification:	Purified by affinity chromatography.

Datasheet

Version: 2.0.0
Revision date: 27 Mar 2025



Storage: Aliquot and store at -20°C. Avoid repeated freeze/thaw cycles.

UniProt Primary AC: Q96F10 ([UniProt](#), [ExpASY](#))

Gene Symbol: SAT2

GeneID: [112483](#)

OMIM: [611463](#)

NCBI Accession: NP_597998.1

HGNC: 23160

KEGG: hsa:112483

Ensembl: ENSG00000141504

String: [9606.ENSP00000269298](#)

Molecular Weight: Calculated MW: 19 kDa
Observed MW: 19 kDa

Buffer: PBS, pH 7.3, containing 0.02% sodium azide, 50% glycerol.

Concentration: > 0.2 mg/ml

Note: THIS PRODUCT IS FOR RESEARCH USE ONLY. NOT FOR USE IN DIAGNOSTIC, THERAPEUTIC OR COSMETIC PROCEDURES. NOT FOR HUMAN OR ANIMAL CONSUMPTION.

For Reference Only