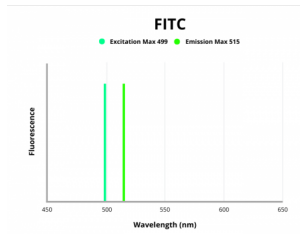


Lipopolysaccharide-Responsive And Beige-Like Anchor Protein (LRBA) Antibody (FITC)

Catalogue No.: abx107042



Fluorescence emission spectra of FITC.

Lipopolysaccharide-responsive and beige-like anchor protein Antibody (FITC) is a Rabbit Polyclonal antibody against Lipopolysaccharide-responsive and beige-like anchor protein conjugated to FITC.

Target:	Lipopolysaccharide-Responsive And Beige-Like Anchor Protein (LRBA)
Clonality:	Polyclonal
Reactivity:	Human
Host:	Rabbit
Recommended dilutions:	Optimal dilutions/concentrations should be determined by the end user.
Conjugation:	FITC
Excitation/Emission:	499/515
Laser Line:	488
Immunogen:	Recombinant human Lipopolysaccharide-responsive and beige-like anchor protein (2-252 AA).
Isotype:	IgG
Form:	Liquid
Purity:	> 95%
Purification:	Purified by Protein G.
Storage:	Aliquot and store at -20°C. Avoid exposure to light. Avoid repeated freeze/thaw cycles.

Datasheet

Version: 2.0.0
Revision date: 29 Nov 2023



UniProt Primary AC: P50851 ([UniProt](#), [ExPASy](#))

Gene Symbol: LRBA

GeneID: [987](#)

OMIM: [606453](#)

NCBI Accession: NP_001186211.2, NM_001199282.2

KEGG: hsa:987

String: [9606.ENSP00000349629](#)

Buffer: 0.01 M PBS, pH 7.4, 0.03% Proclin-300 and 50% Glycerol.

Concentration: 0.25 mg/ml

Note: This product is for research use only.

For Reference Only