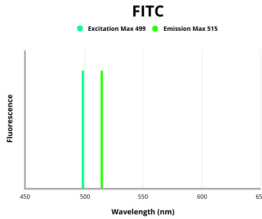


Transforming Protein RhoA (RHOA) Antibody (FITC)

Catalogue No.: abx107413



Fluorescence emission spectra of FITC.

Transforming protein RhoA Antibody (FITC) is a Rabbit Polyclonal antibody against Transforming protein RhoA conjugated to FITC.

Target: Transforming Protein RhoA (RHOA)

Clonality: Polyclonal

Reactivity: Human

Host: Rabbit

Recommended dilutions: Optimal dilutions/concentrations should be determined by the end user.

Conjugation: FITC

Excitation/Emission: 499/515

Laser Line: 488

Immunogen: Recombinant human Transforming protein RhoA protein (1-191AA).

Isotype: IgG

Form: Liquid

Purity: > 95%

Purification: Purified by Protein G.

Storage: Aliquot and store at -20°C. Avoid exposure to light. Avoid repeated freeze/thaw cycles.

Datasheet

Version: 1.0.0
Revision date: 03 Dec 2024



UniProt Primary AC: P61586 ([UniProt](#), [ExPASy](#))

Gene Symbol: RHOA

GeneID: [387](#)

OMIM: [165390](#)

Buffer: 0.01 M PBS, pH 7.4, 0.03% Proclin-300 and 50% Glycerol.

Note: This product is for research use only.

For Reference Only