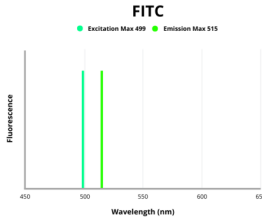


Interleukin 8 / IL8 (CXCL8) Antibody (FITC)

Catalogue No.: abx107724



Fluorescence emission spectra of FITC.

Interleukin-8 Antibody (FITC) is a Rabbit Polyclonal antibody against Interleukin-8 conjugated to FITC.

Target: Interleukin 8 / IL8 (CXCL8)

Clonality: Polyclonal

Reactivity: Chicken

Host: Rabbit

Recommended dilutions: Optimal dilutions/concentrations should be determined by the end user.

Conjugation: FITC

Excitation/Emission: 499/515

Laser Line: 488

Immunogen: Recombinant Gallus gallus Interleukin-8 protein (17-102AA).

Isotype: IgG

Form: Liquid

Purity: > 95%

Purification: Purified by Protein G.

Storage: Aliquot and store at -20°C. Avoid exposure to light. Avoid repeated freeze/thaw cycles.

UniProt Primary AC: P08317 ([UniProt](#), [ExpASY](#))

Datasheet

Version: 1.0.0
Revision date: 25 Dec 2024



Gene Symbol: CXCL8

GeneID: [396495](#)

KEGG: gga:396495

String: [9031.ENSGALP00000041738](#)

Buffer: 0.01 M PBS, pH 7.4, 0.03% Proclin-300 and 50% Glycerol.

Note: This product is for research use only.

For Reference Only