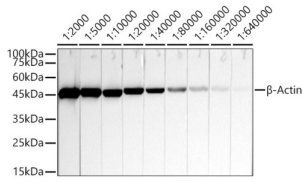
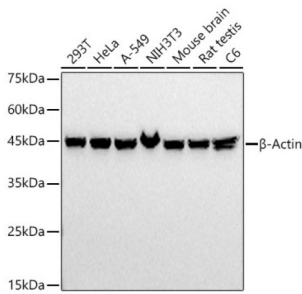


## Beta Actin (ACTB) Antibody

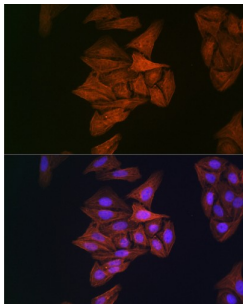
Catalogue No.: abx005571



Western blot analysis of HeLa cell extracts using Beta Actin Antibody (1/2000 - 1/640000 dilution) followed by HRP-conjugated Goat Anti-Mouse IgG H+L ([abx005571](#), 1/10000 dilution) followed by 3% non-fat dry milk in TBST for blocking.



Western blot analysis of 293T, HeLa, A-549, NIH3T3 cell extracts, Mouse brain, Rat testis extracts and C6 cell extracts using Beta Actin Antibody (1/2000 - 1/640000 dilution) followed by HRP-conjugated Goat Anti-Mouse IgG H+L ([abx005571](#), 1/10000 dilution) followed by 3% non-fat dry milk in TBST for blocking.



Immunofluorescence analysis of U2OS cells using Beta Actin Antibody (1/100 dilution, 40x magnification) and DAPI (blue) staining.

Beta actin Antibody is a Mouse Monoclonal antibody against Beta actin. Beta Actin, also named as ACTB and F-Actin, belongs to the actin family. Actins are highly conserved globular proteins that are involved in various types of cell motility and are ubiquitously expressed in all eukaryotic cells. At least six isoforms of actins are known in mammals and other vertebrates: alpha (ACTC1, cardiac muscle 1), alpha 1 (ACTA1, skeletal muscle) and 2 (ACTA2, aortic smooth muscle), beta (ACTB), gamma 1 (ACTG1) and 2 (ACTG2, enteric smooth muscle). Beta and gamma 1 are two non-muscle actin proteins. Most actins consist of 376aa, while ACTG2 (rich in muscles) has 375aa and ACTG1 (found in non-muscle cells) has only 374aa. Beta Actin has been widely used as the internal control in RT-PCR and Western Blotting as a 42-kDa protein. This antibody was generated by full length beta actin protein and can cross-react with other actins.

**Target:** Beta Actin (ACTB)

**Clonality:** Monoclonal

**Clone:** C344

**Reactivity:** Human, Mouse, Rat

# Datasheet

Version: 4.0.0  
Revision date: 30 Aug 2024



<b>Tested Applications:</b>	WB, IHC, IF/ICC
<b>Host:</b>	Mouse
<b>Recommended dilutions:</b>	WB: 1/2000 - 1/20000, IHC-P: 1/50 - 1/200, IF/ICC: 1/50 - 1/200. Not tested in IHC-F. Optimal dilutions/concentrations should be determined by the end user.
<b>Conjugation:</b>	Unconjugated
<b>Immunogen:</b>	Fusion protein of human $\beta$ -Actin
<b>Isotype:</b>	IgG, Kappa
<b>Form:</b>	Liquid
<b>Purification:</b>	Purified by affinity chromatography.
<b>Storage:</b>	Aliquot and store at -20°C. Avoid repeated freeze/thaw cycles.
<b>UniProt Primary AC:</b>	P60709 ( <a href="#">UniProt</a> , <a href="#">ExPASy</a> )
<b>GeneID:</b>	<a href="#">60</a>
<b>KEGG:</b>	hsa:60
<b>String:</b>	<a href="#">9606.ENSP00000349960</a>
<b>Molecular Weight:</b>	Calculated MW: 42 kDa Observed MW: 42 kDa
<b>Buffer:</b>	PBS, pH 7.3, containing 0.05% Proclin-300, 50% glycerol.
<b>Concentration:</b>	1.15 mg/ml
<b>Note:</b>	This product is for research use only.