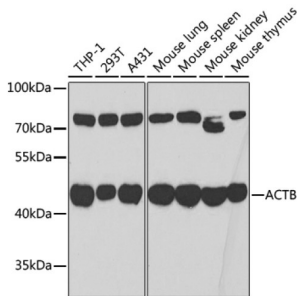
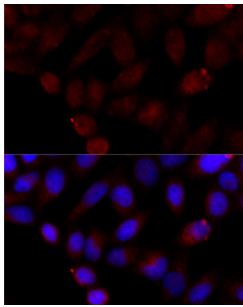


Beta Actin (ACTB) Antibody

Catalogue No.: abx005572



Western blot analysis of extracts of various cell lines, using beta actin antibody (1/1000 dilution).



Immunofluorescence analysis of HeLa cells using beta actin antibody (1/100 dilution, 40x lens). Blue: DAPI for nuclear staining.

β -actin Antibody is a Rabbit Polyclonal antibody against β -actin. Beta Actin, also named as ACTB and F-Actin, belongs to the actin family. Actins are highly conserved globular proteins that are involved in various types of cell motility and are ubiquitously expressed in all eukaryotic cells. At least six isoforms of actins are known in mammals and other vertebrates: alpha (ACTC1, cardiac muscle 1), alpha 1 (ACTA1, skeletal muscle) and 2 (ACTA2, aortic smooth muscle), beta (ACTB), gamma 1 (ACTG1) and 2 (ACTG2, enteric smooth muscle). Beta and gamma 1 are two non-muscle actin proteins. Most actins consist of 376aa, while ACTG2 (rich in muscles) has 375aa and ACTG1 (found in non-muscle cells) has only 374aa. Beta Actin has been widely used as the internal control in RT-PCR and Western Blotting as a 42-kDa protein. This antibody was generated by full length beta actin protein and can cross-react with other actins.

Target: Beta Actin (ACTB)

Clonality: Polyclonal

Reactivity: Human, Mouse, Rat

Tested Applications: WB

Host: Rabbit

Recommended dilutions: WB: 1/500 - 1/1000. Optimal dilutions/concentrations should be determined by the end user.

Conjugation: Unconjugated

Immunogen: Recombinant fusion protein containing a sequence corresponding to amino acids 1-375 of human β -Actin.

Datasheet

Version: 3.0.0
Revision date: 06 Sep 2024



Isotype:	IgG
Form:	Liquid
Purification:	Purified by affinity chromatography.
Storage:	Aliquot and store at -20°C. Avoid repeated freeze/thaw cycles.
UniProt Primary AC:	P60709 (UniProt , ExPASy)
GeneID:	60
NCBI Accession:	NP_001092.1
KEGG:	hsa:60
String:	9606.ENSP00000349960
Molecular Weight:	Calculated MW: 42 kDa Observed MW: 42 kDa
Buffer:	PBS, pH 7.3, containing 0.05% Proclin-300, 50% glycerol.
Concentration:	1.48 mg/ml
Note:	This product is for research use only.

For Reference Only