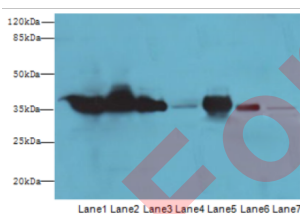
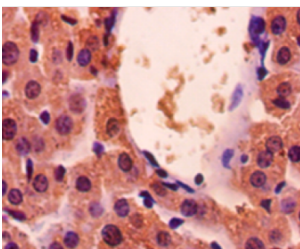
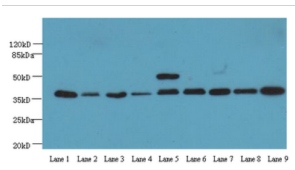
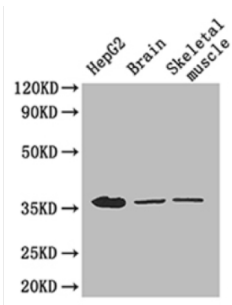


# Glyceraldehyde-3-Phosphate Dehydrogenase (GAPDH) Antibody

Catalogue No.: abx109825



GAPDH Antibody is a Rabbit Polyclonal antibody against GAPDH.

**Target:** Glyceraldehyde-3-Phosphate Dehydrogenase (GAPDH)

**Clonality:** Polyclonal

**Reactivity:** Human

# Datasheet

Version: 2.0.0  
Revision date: 05 Dec 2024



<b>Tested Applications:</b>	ELISA, WB, IHC, IF/ICC
<b>Host:</b>	Rabbit
<b>Recommended dilutions:</b>	WB: 1/500 - 1/5000, IHC: 1/20 - 1/200, IF/ICC: 1/50 - 1/200. Optimal dilutions/concentrations should be determined by the end user.
<b>Conjugation:</b>	Unconjugated
<b>Immunogen:</b>	Recombinant human Glyceraldehyde-3-phosphate dehydrogenase protein (3-105AA).
<b>Isotype:</b>	IgG
<b>Form:</b>	Liquid
<b>Purity:</b>	> 95%
<b>Purification:</b>	Purified by Protein G.
<b>Storage:</b>	Aliquot and store at -20°C. Avoid repeated freeze/thaw cycles.
<b>UniProt Primary AC:</b>	P04406 ( <a href="#">UniProt</a> , <a href="#">ExPASy</a> )
<b>Gene Symbol:</b>	GAPDH
<b>GeneID:</b>	<a href="#">2597</a>
<b>OMIM:</b>	<a href="#">138400</a>
<b>NCBI Accession:</b>	NP_001243728.1, NM_001256799.2
<b>KEGG:</b>	hsa:2597
<b>String:</b>	<a href="#">9606.ENSP00000229239</a>
<b>Buffer:</b>	0.01 M PBS, pH 7.4, 0.03% Proclin-300 and 50% Glycerol.
<b>Note:</b>	This product is for research use only.