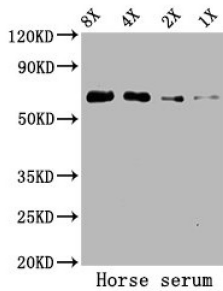


Serum Albumin (ALB) Antibody

Catalogue No.: abx110594



WB analysis of horse serum, using ALB antibody (5.2 µg/ml) and goat anti-rabbit IgG secondary antibody (1/50000 dilution). Predicted band size: 69 kDa, observed band size: 69 kDa.

Horse Serum Albumin Antibody is a Rabbit Polyclonal antibody against Horse Serum Albumin.

Target: Serum Albumin (ALB)

Clonality: Polyclonal

Reactivity: Horse

Tested Applications: ELISA, WB

Host: Rabbit

Recommended dilutions: WB: 1/500 - 1/5000. Optimal dilutions/concentrations should be determined by the end user.

Conjugation: Unconjugated

Immunogen: Serum Albumin purified from Horse serum (Native Protein).

Isotype: IgG

Form: Liquid

Purity: > 95%

Purification: Purified by Protein G.

Storage: Aliquot and store at -20°C. Avoid repeated freeze/thaw cycles.

UniProt Primary AC: P35747 ([UniProt](#), [ExPASy](#))

Gene Symbol: ALB

Datasheet

Version: 2.0.0
Revision date: 04 Jul 2023



GeneID: [100034206](#)

KEGG: ecb:100034206

Buffer: 0.01 M PBS, pH 7.4, 0.03% Proclin-300 and 50% Glycerol.

Concentration: 3 mg/ml

Note: This product is for research use only.

For Reference Only