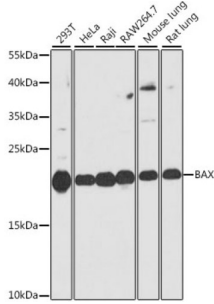
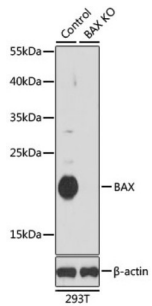


Bcl2 Associated X Protein (BAX) Antibody

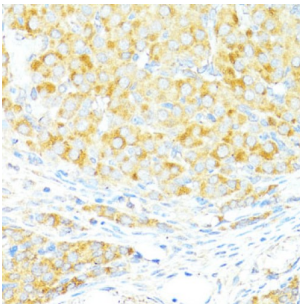
Catalogue No.: abx000595



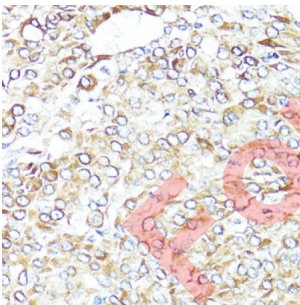
Western blot analysis of extracts of various cell lines using BAX Antibody (1/1000 dilution).



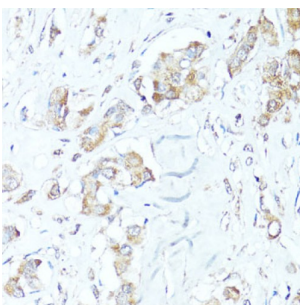
Western blot analysis of extracts from normal (control) and BAX knockout (KO) 293T cells using BAX Antibody (1/1000 dilution).



Immunohistochemistry of paraffin-embedded Rat ovary using BAX Antibody (1/100 dilution, 40x lens).



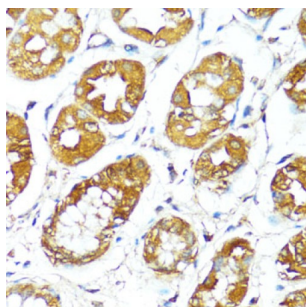
Immunohistochemistry of paraffin-embedded Human lung cancer using BAX Antibody (1/100 dilution, 40x lens).



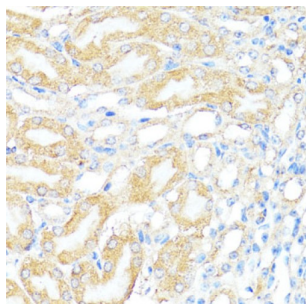
Immunohistochemistry of paraffin-embedded Human breast cancer using BAX Antibody (1/100 dilution, 40x lens).

Datasheet

Version: 3.0.0
Revision date: 05 Feb 2025



Immunohistochemistry of paraffin-embedded Human stomach using BAX Antibody (1/100 dilution, 40x lens).



Immunohistochemistry of paraffin-embedded Mouse kidney using BAX Antibody (1/100 dilution, 40x lens).

BAX Antibody is a Rabbit Polyclonal antibody against BAX. The protein encoded by this gene belongs to the BCL2 protein family. BCL2 family members form hetero- or homodimers and act as anti- or pro-apoptotic regulators that are involved in a wide variety of cellular activities. This protein forms a heterodimer with BCL2, and functions as an apoptotic activator. This protein is reported to interact with, and increase the opening of, the mitochondrial voltage-dependent anion channel (VDAC), which leads to the loss in membrane potential and the release of cytochrome c. The expression of this gene is regulated by the tumor suppressor P53 and has been shown to be involved in P53-mediated apoptosis. Multiple alternatively spliced transcript variants, which encode different isoforms, have been reported for this gene.

Target: Bcl2 Associated X Protein (BAX)

Clonality: Polyclonal

Reactivity: Human, Mouse, Rat

Tested Applications: WB, IHC

Host: Rabbit

Recommended dilutions: WB: 1/500 - 1/2000, IHC-P: 1/100 - 1/200. Not tested in IHC-F. Optimal dilutions/concentrations should be determined by the end user.

Conjugation: Unconjugated

Immunogen: A synthetic peptide corresponding to human BAX

Isotype: IgG

Form: Liquid

Datasheet

Version: 3.0.0
Revision date: 05 Feb 2025



Purification:	Purified by affinity chromatography.
Storage:	Aliquot and store at -20°C. Avoid repeated freeze/thaw cycles.
UniProt Primary AC:	Q07812 (UniProt , ExpASY)
Gene Symbol:	BAX
GeneID:	581
NCBI Accession:	NP_620116.1
Molecular Weight:	Calculated MW: 4 kDa/12 kDa/15 kDa/18 kDa/19 kDa/21 kDa/24 kDa Observed MW: 20 kDa
Buffer:	PBS, pH 7.3, containing 0.02% sodium azide, 50% glycerol.
Concentration:	1 mg/ml
Note:	This product is for research use only.

For Reference Only