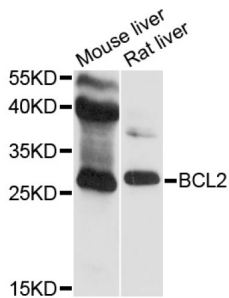
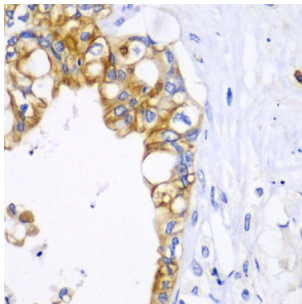


Apoptosis Regulator Bcl-2 (BCL2) Antibody

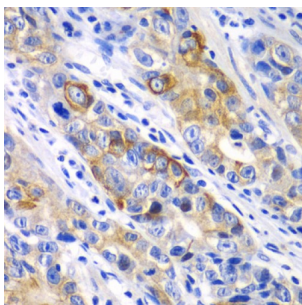
Catalogue No.: abx000596



Western blot analysis of extracts of various cell lines, using BCL2 antibody (abx000596) at 1/500 dilution.



Immunohistochemistry of paraffin-embedded human liver cancer using BCL2 antibody (abx000596) at dilution of 1/100 (40x lens).



Immunohistochemistry of paraffin-embedded human gastric cancer using BCL2 antibody (abx000596) at dilution of 1/100 (40x lens).

BCL2 Antibody is a Rabbit Polyclonal antibody against BCL2. This gene encodes an integral outer mitochondrial membrane protein that blocks the apoptotic death of some cells such as lymphocytes. Constitutive expression of BCL2, such as in the case of translocation of BCL2 to Ig heavy chain locus, is thought to be the cause of follicular lymphoma. Two transcript variants, produced by alternate splicing, differ in their C-terminal ends.

Target: Apoptosis Regulator Bcl-2 (BCL2)

Clonality: Polyclonal

Reactivity: Human, Mouse

Tested Applications: WB, IHC, IF/ICC, IP

Host: Rabbit

Datasheet

Version: 2.0.0
Revision date: 19 Sep 2024



Recommended dilutions: WB: 1/500 - 1/1000, IHC-P: 1/50 - 1/200, IF/ICC: 1/50 - 1/200, IP: 0.5-4 µg/200-400 µg whole cell extracts. Not tested in IHC-F. Optimal dilutions/concentrations should be determined by the end user.

Conjugation: Unconjugated

Immunogen: A synthetic peptide corresponding to a sequence within amino acids 1-100 of human Bcl-2.

Isotype: IgG

Form: Liquid

Purification: Purified by affinity chromatography.

Storage: Aliquot and store at -20°C. Avoid repeated freeze/thaw cycles.

UniProt Primary AC: P10415 ([UniProt](#), [ExPASy](#)) P10417 ([UniProt](#), [ExPASy](#)) P49950 ([UniProt](#), [ExPASy](#))

Gene Symbol: BCL2

GeneID: [596](#) [12043](#) [24224](#)

OMIM: [151430](#)

NCBI Accession: NP_000624.2

HGNC: 990

KEGG: hsa:596

Ensembl: ENSG00000171791

String: [9606.ENSP00000381185](#)

Molecular Weight: Calculated MW: 26 kDa

Observed MW: 26 kDa

Buffer: PBS, pH 7.3, containing 0.05% Proclin-300, 50% glycerol.

Concentration: > 0.2 mg/ml

Note: This product is for research use only.