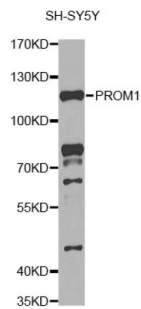
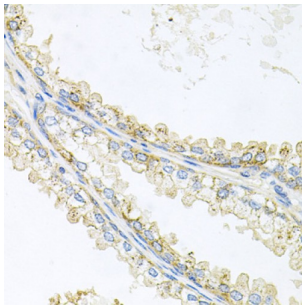


Prominin 1 (PROM1) Antibody

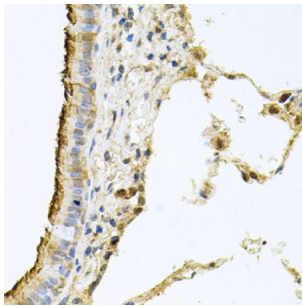
Catalogue No.: abx000605



Western blot analysis of extracts of SH-SY5Y cells, using PROM1 antibody (abx000605) at 1/1000 dilution.



Immunohistochemistry of paraffin-embedded human prostate using PROM1 antibody (abx000605) at dilution of 1/100 (40x lens).



Immunohistochemistry of paraffin-embedded human lung using PROM1 antibody (abx000605) at dilution of 1/100 (40x lens).

PROM1 Antibody is a Rabbit Polyclonal antibody against PROM1. This gene encodes a pentaspan transmembrane glycoprotein. The protein localizes to membrane protrusions and is often expressed on adult stem cells, where it is thought to function in maintaining stem cell properties by suppressing differentiation. Mutations in this gene have been shown to result in retinitis pigmentosa and Stargardt disease. Expression of this gene is also associated with several types of cancer. This gene is expressed from at least five alternative promoters that are expressed in a tissue-dependent manner. Multiple transcript variants encoding different isoforms have been found for this gene. [provided by RefSeq, Mar 2009].

Target: Prominin 1 (PROM1)

Clonality: Polyclonal

Reactivity: Human, Mouse, Rat

Tested Applications: WB, IF/ICC, IP

Host: Rabbit

Datasheet

Version: 1.0.0
Revision date: 02 Dec 2024



Recommended dilutions: WB: 1/500 - 1/1000, IF/ICC: 1/50 - 1/200, IP: 1/50 - 1/200. Optimal dilutions/concentrations should be determined by the end user.

Conjugation: Unconjugated

Immunogen: A synthetic peptide corresponding to a sequence within amino acids 179-433 of human CD133.

Isotype: IgG

Form: Liquid

Purification: Purified by affinity chromatography.

Storage: Aliquot and store at -20°C. Avoid repeated freeze/thaw cycles.

UniProt Primary AC: O43490 ([UniProt](#), [ExPASy](#))

Gene Symbol: PROM1

GeneID: [8842](#)

OMIM: [604365](#)

NCBI Accession: NP_006008.1

HGNC: 9454

KEGG: hsa:8842

Ensembl: ENSG00000007062

String: [9606.ENSP00000426809](#)

Molecular Weight: Calculated MW: 97 kDa
Observed MW: 120 kDa

Buffer: PBS, pH 7.3, containing 0.01% thimerosal, 50% glycerol.

Concentration: > 0.2 mg/ml

Note: This product is for research use only.