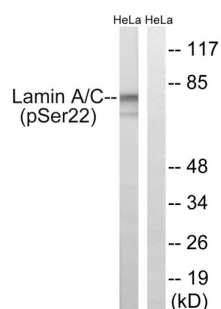


Lamin A/C Phospho-Ser22 (LMNA pS22) Antibody

Catalogue No.: abx119208



Western blot analysis of lysates from HeLa cells treated with paclitaxel (1 μ M 24 h), using Lamin A (Phospho-Ser22) Antibody. The lane on the right is blocked with the phosphopeptide.

Lamin A (pS22) Antibody is a Rabbit Polyclonal antibody against Lamin A (pS22).

Target:	Lamin A/C Phospho-Ser22 (LMNA pS22)
Clonality:	Polyclonal
Target Modification:	Ser22
Modification:	Phosphorylation
Reactivity:	Human, Mouse, Rat
Tested Applications:	ELISA, WB
Host:	Rabbit
Recommended dilutions:	ELISA: 1/1000, WB: 1/500 - 1/3000. Optimal dilutions/concentrations should be determined by the end user.
Conjugation:	Unconjugated
Immunogen:	The antiserum was produced against synthesized phosphopeptide derived from human Lamin A around the phosphorylation site of serine 22 (P-L-S ^P -P-T).
Isotype:	IgG
Form:	Liquid
Purification:	Purified from rabbit antiserum by affinity chromatography using phosphopeptide. The antibody against non-phosphopeptide was removed by chromatography using corresponding non-phosphopeptide.
Storage:	Aliquot and store at -20°C. Avoid repeated freeze/thaw cycles.

Datasheet

Version: 1.0.0

Revision date: 24 Apr 2025



UniProt Primary AC: P02545 ([UniProt](#), [ExPASy](#))

KEGG: hsa:4000

String: [9606.ENSP00000357283](#)

Buffer: PBS (without Mg^{2+} and Ca^{2+}), pH 7.4, 150 mM NaCl, 0.02% sodium azide, 50% glycerol.

Specificity: Detects endogenous levels of Lamin A only when phosphorylated at serine 22.

Concentration: 1 mg/ml

Note: THIS PRODUCT IS FOR RESEARCH USE ONLY. NOT FOR USE IN DIAGNOSTIC, THERAPEUTIC OR COSMETIC PROCEDURES. NOT FOR HUMAN OR ANIMAL CONSUMPTION.

For Reference Only