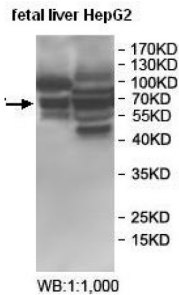
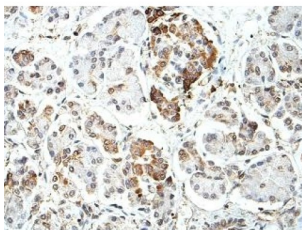


Butyrophilin-Like Protein 2 (BTNL2) Antibody

Catalogue No.: abx122175



Western blot analysis of fetal liver and HepG2 cell lysate, using BTNL2 antibody.



IHC analysis of formalin-fixed paraffin-embedded fetal pancreas with cytoplasmic staining, using BTNL2 antibody (1/100 dilution).

Rabbit Polyclonal against the BTNL2 protein.

Target:	Butyrophilin-Like Protein 2 (BTNL2)
Clonality:	Polyclonal
Reactivity:	Human
Tested Applications:	ELISA, WB, IHC
Host:	Rabbit
Recommended dilutions:	ELISA: 1/20000 - 1/80000, WB: 1/500 - 1/2000, IHC: 1/100 - 1/200. Optimal dilutions/concentrations should be determined by the end user.
Conjugation:	Unconjugated
Immunogen:	Recombinant fragment corresponding to 54-245 AA of human BTNL2.
Isotype:	IgG
Form:	Lyophilized
Purification:	Purified by antigen affinity column chromatography.

Datasheet

Version: 2.0.0

Revision date: 11 Feb 2025



Reconstitution: Reconstitute in 100 µl of sterile distilled H₂O with 50% glycerol.

Storage: Store at -20 °C. Avoid repeated freeze/thaw cycles.

NCBI Accession: BC127642

Buffer: Prior to lyophilization: 1% BSA and 0.02% NaN₃.

Specificity: Predicted to react with Mouse and Rat BTNL2.

Concentration: Lyophilized form: Not applicable.
After reconstitution: 1 mg/ml.

Note: This product is for research use only.

For Reference Only