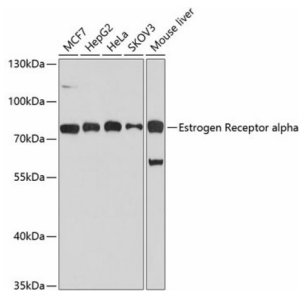


Estrogen Receptor (ESR1) Antibody

Catalogue No.: abx000676



Western blot analysis of extracts of various cell lines using Estrogen Receptor alpha Antibody (1/1000 dilution).

ESR1 Antibody is a Rabbit Polyclonal antibody against ESR1. This gene encodes an estrogen receptor, a ligand-activated transcription factor composed of several domains important for hormone binding, DNA binding, and activation of transcription. The protein localizes to the nucleus where it may form a homodimer or a heterodimer with estrogen receptor 2. Estrogen and its receptors are essential for sexual development and reproductive function, but also play a role in other tissues such as bone. Estrogen receptors are also involved in pathological processes including breast cancer, endometrial cancer, and osteoporosis. Alternative promoter usage and alternative splicing result in dozens of transcript variants, but the full-length nature of many of these variants has not been determined.

Target:	Estrogen Receptor (ESR1)
Clonality:	Polyclonal
Reactivity:	Human, Mouse
Tested Applications:	WB
Host:	Rabbit
Recommended dilutions:	WB: 1/1000 - 1/4000. Optimal dilutions/concentrations should be determined by the end user.
Conjugation:	Unconjugated
Immunogen:	Recombinant fusion protein corresponding to human Estrogen Receptor alpha
Isotype:	IgG
Form:	Liquid
Purification:	Purified by affinity chromatography.
Storage:	Aliquot and store at -20°C. Avoid repeated freeze/thaw cycles.
UniProt Primary AC:	P03372 (UniProt , ExPASy)

Datasheet

Version: 4.0.0
Revision date: 31 Jan 2025



Gene Symbol: ESR1

GeneID: [2099](#)

NCBI Accession: NP_000116.2

KEGG: hsa:2099

String: [9606.ENSP00000405330](#)

Molecular Weight: Calculated MW: 35 kDa/47 kDa/53 kDa/66 kDa
Observed MW: 75 kDa

Buffer: PBS, pH 7.3, containing 0.02% sodium azide, 50% glycerol.

Concentration: 1 mg/ml

Note: This product is for research use only.

For Reference Only