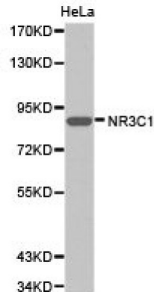


## Nuclear Receptor Subfamily 3, Group C, Member 1 (Glucocorticoid Receptor) (NR3C1) Antibody

Catalogue No.: abx117236



Western blot analysis of HeLa cells, using NR3C1 antibody.

NR3C1 Antibody is a Rabbit Polyclonal antibody against NR3C1.

<b>Target:</b>	Nuclear Receptor Subfamily 3, Group C, Member 1 (Glucocorticoid Receptor) (NR3C1)
<b>Clonality:</b>	Polyclonal
<b>Reactivity:</b>	Human, Mouse, Rat
<b>Tested Applications:</b>	ELISA, WB, IHC
<b>Host:</b>	Rabbit
<b>Recommended dilutions:</b>	WB: 1/500 - 1/2000, IHC: 1/50 - 1/200. Optimal dilutions/concentrations should be determined by the end user.
<b>Conjugation:</b>	Unconjugated
<b>Immunogen:</b>	Recombinant protein of human NR3C1.
<b>Isotype:</b>	IgG
<b>Form:</b>	Liquid
<b>Purification:</b>	Purified by affinity chromatography.
<b>Storage:</b>	Aliquot and store at -20°C. Avoid repeated freeze/thaw cycles.
<b>UniProt Primary AC:</b>	P04150 ( <a href="#">UniProt</a> , <a href="#">ExPASy</a> )
<b>Gene Symbol:</b>	NR3C1

# Datasheet

Version: 2.0.0  
Revision date: 05 Feb 2025



**GeneID:** [2908](#)

**String:** [9606.ENSP00000231509](#)

**Buffer:** PBS, pH 7.3, containing 0.02% sodium azide and 50% glycerol.

**Concentration:** 1 mg/ml

**Note:** This product is for research use only.

For Reference Only