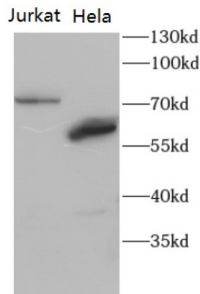
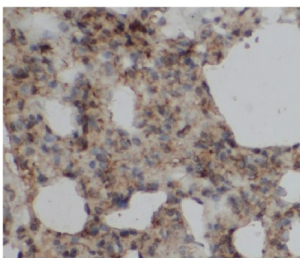


Ribosomal Protein S6 Kinase Alpha-5 (RPS6KA5) Antibody

Catalogue No.: abx010390



WB analysis of Jurkat and HeLa cells, using MSK1 antibody (1/1000 dilution).



IHC-P analysis of rat lung tissue, using MSK1 antibody (1/100 dilution).

Ribosomal Protein S6 Kinase Alpha-5 (RPS6KA5) Antibody is a Rabbit Polyclonal antibody for the detection of MSK1.

Target:	Ribosomal Protein S6 Kinase Alpha-5 (RPS6KA5)
Clonality:	Polyclonal
Reactivity:	Human, Rat
Tested Applications:	ELISA, WB, IHC
Host:	Rabbit
Recommended dilutions:	WB: 1/500 - 1/2000, IHC: 1/20 - 1/200. Optimal dilutions/concentrations should be determined by the end user.
Conjugation:	Unconjugated
Immunogen:	ribosomal protein S6 kinase, 90kDa, polypeptide 5
Isotype:	IgG
Form:	Liquid
Purity:	≥ 95% (SDS-PAGE)

Datasheet

Version: 2.0.0
Revision date: 06 Apr 2025



Purification:	Purified by immunogen affinity chromatography.
Storage:	Aliquot and store at -20°C. Avoid repeated freeze/thaw cycles.
Validity:	12 months.
UniProt Primary AC:	O75582 (UniProt , ExPASy)
Gene Symbol:	RPS6KA5
GeneID:	9252
OMIM:	603607
HGNC:	10434
KEGG:	hsa:9252
Ensembl:	ENSG00000100784
String:	9606.ENSP00000479667
Molecular Weight:	Observed MW: 60 kDa, 72 kDa
Buffer:	PBS, pH 7.3, with 0.02% sodium azide and 50% glycerol.
Concentration:	2 mg/ml
Note:	THIS PRODUCT IS FOR RESEARCH USE ONLY. NOT FOR USE IN DIAGNOSTIC, THERAPEUTIC OR COSMETIC PROCEDURES. NOT FOR HUMAN OR ANIMAL CONSUMPTION.

For Reference Only