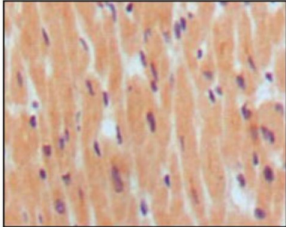


Natriuretic Peptides B (NPPB) Antibody

Catalogue No.: abx010472



Immunohistochemical analysis of paraffin-embedded human normal myocardium, showing cytoplasmic localization using BNP1 antibody with DAB staining.

Natriuretic Peptides B (NPPB) belongs to a family of structurally similar peptide hormones, which includes atrial natriuretic peptide (ANP), BNP, C-type natriuretic peptide (CNP) and urodilatin. ANP and BNP act mainly as cardiac hormones, produced primarily by the atrium and ventricle, respectively, while the gene encoding C-type natriuretic peptide is expressed mainly in the brain. BNP circulates in blood as a peptide hormone with natriuretic, vasodilatory and renin inhibitory properties. It is secreted predominantly by the left ventricular myocytes in response to volume expansion and pressure overload. These peptides are characterized by a common 17 amino acid ring structure with a disulfide bond between two cysteine residues. This ring structure shows high homology between different natriuretic.

Target:	Natriuretic Peptides B (NPPB)
Clonality:	Monoclonal
Reactivity:	Human
Tested Applications:	ELISA, IHC
Host:	Mouse
Recommended dilutions:	ELISA: 1/10000, IHC: 1/200 - 1/1000. Optimal dilutions/concentrations should be determined by the end user.
Conjugation:	Unconjugated
Immunogen:	Synthetic peptide corresponding to aa (Cys-Phe-Gly-Arg-Lys-Met-Asp-Arg-Ile-Ser-Ser-Ser-Ser) of human BNP, conjugated to KLH.
Isotype:	IgG ₁
Form:	Liquid
Purification:	Unpurified ascites.
Storage:	Aliquot and store at -20°C. Avoid repeated freeze/thaw cycles.

Datasheet

Version: 2.0.0
Revision date: 14 Jan 2025



UniProt Primary AC:	P16860 (UniProt , ExPASy)
Gene Symbol:	NPPB
GeneID:	4879
OMIM:	600295
HGNC:	7940
KEGG:	hsa:4879
Ensembl:	ENSG00000120937
String:	9606.ENSP00000365651
Molecular Weight:	15 kDa
Buffer:	Ascitic fluid containing 0.03% sodium azide.
Concentration:	Not determined.
Note:	This product is for research use only.

For Reference Only