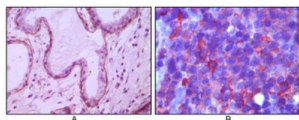


## Neprilysin / NEP (MME) Antibody

Catalogue No.: abx010513



Immunohistochemical analysis of paraffin-embedded human breast ductal myoepithelium (A) and lymph tissue (B), showing cytoplasmic (A) and membrane (B) localization using CD10 antibody with DAB staining (A) and AEC staining (B).

CD10 (MME): membrane metallo-endopeptidase. This gene encodes a common acute lymphocytic leukemia antigen that is an important cell surface marker in the diagnosis of human acute lymphocytic leukemia (ALL). This protein is present on leukemic cells of pre-B phenotype, which represent 85% of cases of ALL. This protein is not restricted to leukemic cells, however, and is found on a variety of normal tissues. It is a glycoprotein that is particularly abundant in kidney, where it is present on the brush border of proximal tubules and on glomerular epithelium. The protein is a neutral endopeptidase that cleaves peptides at the amino side of hydrophobic residues and inactivates several peptide hormones including glucagon, enkephalins, substance P, neurotensin, oxytocin, and bradykinin. This gene, which encodes a 100-kD type II transmembrane glycoprotein, exists in a single copy of greater than 45 kb. The 5' untranslated region of this gene is alternatively spliced, resulting in four separate mRNA transcripts. The coding region is not affected by alternative splicing.

<b>Target:</b>	Neprilysin / NEP (MME)
<b>Clonality:</b>	Monoclonal
<b>Reactivity:</b>	Human
<b>Tested Applications:</b>	ELISA, IHC
<b>Host:</b>	Mouse
<b>Recommended dilutions:</b>	ELISA: 1/10000, IHC: 1/200 - 1/1000. Optimal dilutions/concentrations should be determined by the end user.
<b>Conjugation:</b>	Unconjugated
<b>Immunogen:</b>	Purified recombinant fragment of human CD-10 expressed in E. coli.
<b>Isotype:</b>	IgG <sub>2b</sub>
<b>Form:</b>	Liquid
<b>Purification:</b>	Unpurified ascites.
<b>Storage:</b>	Aliquot and store at -20°C. Avoid repeated freeze/thaw cycles.

# Datasheet

Version: 1.0.0  
Revision date: 27 Dec 2024



**UniProt Primary AC:** P08473 ([UniProt](#), [ExPASy](#))

**Gene Symbol:** MME

**GeneID:** [4311](#)

**OMIM:** [120520](#)

**HGNC:** 7154

**KEGG:** hsa:4311

**Ensembl:** ENSG00000196549

**String:** [9606.ENSP00000418525](#)

**Molecular Weight:** 85 kDa

**Buffer:** Ascitic fluid containing 0.03% sodium azide.

**Concentration:** Not determined.

**Note:** This product is for research use only.

For Reference Only