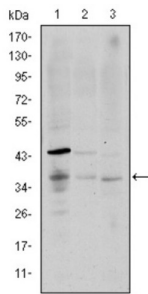
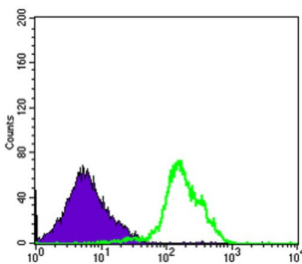


T-cell Surface Glycoprotein CD1a (CD1A) Antibody

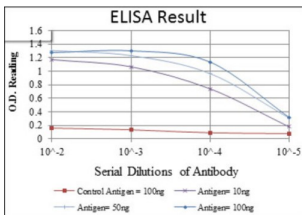
Catalogue No.: abx010518



Western blot analysis using CD1A antibody against K562 (1), RAJI (2), and MOLT4 (3) cell lysate.



Flow cytometric analysis of RAJI cells using CD1A antibody (green) and negative control (purple).



Red: Control Antigen (100ng) ; Purple: Antigen (10ng) ; Green: Antigen (50ng) ; Blue: Antigen (100ng).

CD1a is a non polymorphic MHC Class 1 related cell surface glycoprotein, expressed in association with beta 2 microglobulin. CD1a is expressed by cortical thymocytes, Langerhan's cells and by interdigitating cells. CD1a is also expressed by some malignancies of T cell lineage and in histiocytosis X. Tissue specificity: Expressed on cortical thymocytes, epidermal Langerhans cells, dendritic cells, on certain T-cell leukemias, and in various other tissues.

Target: T-cell Surface Glycoprotein CD1a (CD1A)

Clonality: Monoclonal

Reactivity: Human

Tested Applications: ELISA, WB, FCM

Host: Mouse

Recommended dilutions: ELISA: 1/10000, WB: 1/500 - 1/2000, FCM: 1/200 - 1/400. Optimal dilutions/concentrations should be determined by the end user.

Datasheet

Version: 3.0.0
Revision date: 06 Mar 2025



Conjugation:	Unconjugated
Immunogen:	Purified recombinant fragment of human CD1A expressed in E. coli.
Isotype:	IgG ₁
Form:	Liquid
Purification:	Unpurified ascites.
Storage:	Aliquot and store at -20°C. Avoid repeated freeze/thaw cycles.
UniProt Primary AC:	P06126 (UniProt , ExPASy)
Gene Symbol:	CD1A
GeneID:	909
OMIM:	188370
HGNC:	1634
KEGG:	hsa:909
Ensembl:	ENSG00000158477
String:	9606.ENSP00000289429
Molecular Weight:	37 kDa
Buffer:	Ascitic fluid containing 0.03% sodium azide.
Concentration:	Not determined.
Note:	THIS PRODUCT IS FOR RESEARCH USE ONLY. NOT FOR USE IN DIAGNOSTIC, THERAPEUTIC OR COSMETIC PROCEDURES. NOT FOR HUMAN OR ANIMAL CONSUMPTION.