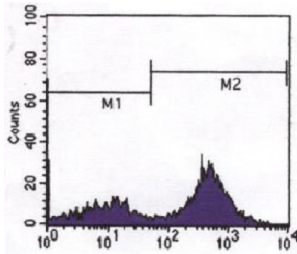


T-Cell Surface Glycoprotein CD3 Epsilon Chain (CD3E) Antibody

Catalogue No.: abx010520



FCM analysis CD3 expressed in human peripheral blood cells.

CD3 is a component of T cell surface receptor (TCR), it contains 5 invariable chains: gamma, delta, epsilon-, and zeta/eta. Clevers et al. (1988) showed the TCR/CD3 complex consists of either a TCR alpha/beta or TCR gamma/delta heterodimer coexpressed at the cell surface with the invariant subunits, CD3 is responsible for the signal transduction of the TCR.

Target:	T-Cell Surface Glycoprotein CD3 Epsilon Chain (CD3E)
Clonality:	Monoclonal
Reactivity:	Human
Tested Applications:	ELISA, FCM
Host:	Mouse
Recommended dilutions:	ELISA: 1/10000, FCM: 1/200 - 1/400. Optimal dilutions/concentrations should be determined by the end user.
Conjugation:	Unconjugated
Immunogen:	Purified recombinant fragment of human CD3 expressed in E. coli.
Isotype:	IgG _{2a}
Form:	Liquid
Purification:	Unpurified ascites.
Storage:	Aliquot and store at -20°C. Avoid repeated freeze/thaw cycles.
UniProt Primary AC:	P07766 (UniProt , ExpASY)
Gene Symbol:	CD3E

Datasheet

Version: 2.0.0
Revision date: 17 Dec 2024



GeneID: [919](#)

OMIM: [186830](#)

HGNC: 1674

KEGG: hsa:916

Ensembl: ENSG00000198851

String: [9606.ENSP00000354566](#)

Molecular Weight: 23 kDa

Buffer: Ascitic fluid containing 0.03% sodium azide.

Concentration: Not determined.

Note: This product is for research use only.

For Reference Only