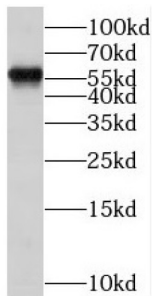
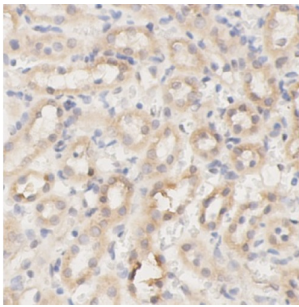


Estrogen Receptor 2 (ESR2) Antibody

Catalogue No.: abx010751



WB analysis of HeLa cells, using ESR2 antibody (1/1000 dilution).



IHC-P analysis of Rat testis tissue, using ESR2 antibody (1/200 dilution).

Estrogen Receptor 2 (ESR2) Antibody is a Rabbit Polyclonal antibody for the detection of ESR2.

Target:	Estrogen Receptor 2 (ESR2)
Clonality:	Polyclonal
Reactivity:	Human, Rat
Tested Applications:	ELISA, WB, IHC
Host:	Rabbit
Recommended dilutions:	WB: 1/200 - 1/2000, IHC: 1/50 - 1/200. Optimal dilutions/concentrations should be determined by the end user.
Conjugation:	Unconjugated
Immunogen:	Estrogen receptor beta
Isotype:	IgG
Form:	Liquid
Purity:	≥ 95% (SDS-PAGE)

Datasheet

Version: 2.0.0
Revision date: 19 Mar 2025



Purification:	Purified by immunogen affinity chromatography.
Storage:	Aliquot and store at -20°C. Avoid repeated freeze/thaw cycles.
Validity:	12 months.
UniProt Primary AC:	Q92731 (UniProt , ExPASy)
Gene Symbol:	ESR2
GeneID:	2100
OMIM:	601663
HGNC:	3468
Ensembl:	ENSG00000140009
Molecular Weight:	Observed MW: 55-60 kDa
Buffer:	PBS, pH 7.3, with 0.02% sodium azide and 50% glycerol.
Concentration:	2 mg/ml
Note:	THIS PRODUCT IS FOR RESEARCH USE ONLY. NOT FOR USE IN DIAGNOSTIC, THERAPEUTIC OR COSMETIC PROCEDURES. NOT FOR HUMAN OR ANIMAL CONSUMPTION.

For Reference Only