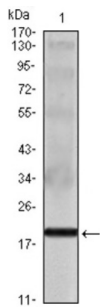


Interleukin 16 (IL16) Antibody

Catalogue No.: abx011003



Western blot analysis using IL16 antibody against IL16 recombinant protein.

Interleukin-16, also known as lymphocyte chemoattractant factor (LCF), is a chemotactic cytokine that stimulates a migratory response in CD4+ lymphocytes, monocytes, and eosinophils through binding to the CD4 receptor. IL-16 induces human T-lymphocyte expression of interleukin 2 receptor and upregulates major histocompatibility complex II molecules on resting human T lymphocyte. It is able to render CD4+ T cells unresponsive to TCR/CD3 stimuli. Moreover, IL-16 inhibits the replication of T cell and monocyte tropic HIV strains in vitro.

Target:	Interleukin 16 (IL16)
Clonality:	Monoclonal
Reactivity:	Human
Tested Applications:	ELISA
Host:	Mouse
Recommended dilutions:	ELISA: 1/10000. Optimal dilutions/concentrations should be determined by the end user.
Conjugation:	Unconjugated
Immunogen:	Purified recombinant fragment of human IL-16 expressed in E. coli.
Isotype:	IgG ₁
Form:	Liquid
Purification:	Unpurified ascites.
Storage:	Aliquot and store at -20°C. Avoid repeated freeze/thaw cycles.
UniProt Primary AC:	Q14005 (UniProt , ExpASY)

Datasheet

Version: 1.0.0
Revision date: 31 Dec 2024



Gene Symbol: IL16

GeneID: [3603](#)

OMIM: [603035](#)

HGNC: 5980

KEGG: hsa:3603

Ensembl: ENSG00000172349

String: [9606.ENSP00000302935](#)

Molecular Weight: 20 kDa

Buffer: Ascitic fluid containing 0.03% sodium azide.

Concentration: Not determined.

Note: This product is for research use only.

For Reference Only