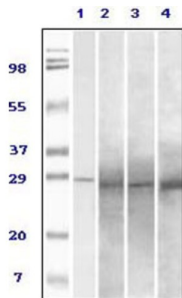
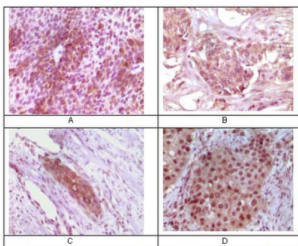


## RAB25, Member RAS Oncogene Family (Rab25) Antibody

Catalogue No.: abx011140



Western blot analysis using Rab25 antibody against truncated Rab25 recombinant protein (1), human ovary carcinoma (2), stomach carcinoma (3), breast carcinoma (4) tissue lysate.



Immunohistochemical analysis of paraffin-embedded human bladder carcinoma (A), breast carcinoma (B), esophagus carcinoma (C), skin carcinoma (D) tissue, showing cytoplasmic localization using Rab25 antibody with DAB staining.

Members of the Ras-related superfamily of GTP binding proteins, which includes Ras, Rho, Rab and ARF subfamilies, exhibit 30-50% similarity with Ras p21. Rab proteins play an important role for either in endocytosis or in biosynthetic protein transport. The possibility that Rab proteins might also direct the exocytosis from secretory vesicles to the plasma membrane is supported by the observation that in yeast, the SEC4 protein, which is 40% similar to Rab proteins, is associated with secretory vesicles. Rab proteins located on the cytoplasmic face of organelles and vesicles, rab proteins are involved in intracellular membrane fusion reactions. Rab25 was cloned from a gastric parietal cell cDNA library and is expressed in epithelial tissues such as the gastrointestinal mucosae, kidney, and lung, which encoded a protein of 28 kDa.

**Target:** RAB25, Member RAS Oncogene Family (Rab25)

**Clonality:** Monoclonal

**Reactivity:** Human

**Tested Applications:** ELISA, IHC

**Host:** Mouse

**Recommended dilutions:** ELISA: 1/10000, IHC: 1/200 - 1/1000. Optimal dilutions/concentrations should be determined by the end user.

**Conjugation:** Unconjugated

**Immunogen:** Purified recombinant fragment of Rab25 expressed in *E. coli*.

# Datasheet

Version: 2.0.0  
Revision date: 16 Nov 2024



<b>Isotype:</b>	IgG <sub>2a</sub>
<b>Form:</b>	Liquid
<b>Purification:</b>	Unpurified ascites.
<b>Storage:</b>	Aliquot and store at -20°C. Avoid repeated freeze/thaw cycles.
<b>UniProt Primary AC:</b>	P57735 ( <a href="#">UniProt</a> , <a href="#">ExPASy</a> )
<b>Gene Symbol:</b>	RAB25
<b>GeneID:</b>	<a href="#">57111</a>
<b>OMIM:</b>	<a href="#">612942</a>
<b>HGNC:</b>	18238
<b>KEGG:</b>	hsa:57111
<b>Ensembl:</b>	ENSG00000132698
<b>String:</b>	<a href="#">9606.ENSP00000354376</a>
<b>Molecular Weight:</b>	24 kDa
<b>Buffer:</b>	Ascitic fluid containing 0.03% sodium azide.
<b>Concentration:</b>	Not determined.
<b>Note:</b>	This product is for research use only.

For Reference Only