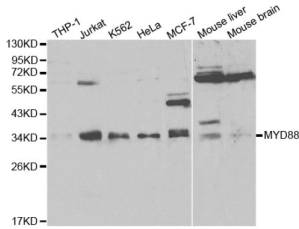


Myeloid Differentiation Primary Response Protein MyD88 (MYD88) Antibody

Catalogue No.: abx000933



Western blot analysis of extracts of various cell lines, using MyD88 antibody (abx000933) at 1/1000 dilution.

MyD88 Antibody is a Rabbit Polyclonal antibody against MyD88. This gene encodes a cytosolic adapter protein that plays a central role in the innate and adaptive immune response. This protein functions as an essential signal transducer in the interleukin-1 and Toll-like receptor signaling pathways. These pathways regulate that activation of numerous proinflammatory genes. The encoded protein consists of an N-terminal death domain and a C-terminal Toll-interleukin1 receptor domain. Patients with defects in this gene have an increased susceptibility to pyogenic bacterial infections. Alternate splicing results in multiple transcript variants.

Target:	Myeloid Differentiation Primary Response Protein MyD88 (MYD88)
Clonality:	Polyclonal
Reactivity:	Human, Mouse, Rat
Tested Applications:	WB, IF/ICC
Host:	Rabbit
Recommended dilutions:	WB: 1/100 - 1/500, IF/ICC: 1/50 - 1/200. Optimal dilutions/concentrations should be determined by the end user.
Conjugation:	Unconjugated
Immunogen:	A synthetic peptide corresponding to a sequence within amino acids 20-140 of human MyD88.
Isotype:	IgG
Form:	Liquid
Purification:	Purified by affinity chromatography.
Storage:	Aliquot and store at -20°C. Avoid repeated freeze/thaw cycles.

Datasheet

Version: 2.0.0
Revision date: 02 Dec 2024



UniProt Primary AC: Q99836 ([UniProt](#), [ExPASy](#))

Gene Symbol: MYD88

GeneID: [4615](#)

NCBI Accession: NP_002459.2

KEGG: hsa:4615

String: [9606.ENSP00000401399](#)

Molecular Weight: Calculated MW: 33 kDa
Observed MW: 33 kDa

Buffer: PBS, pH 7.3, containing 0.01% thimerosal, 50% glycerol.

Concentration: > 0.2 mg/ml

Note: This product is for research use only.

For Reference Only